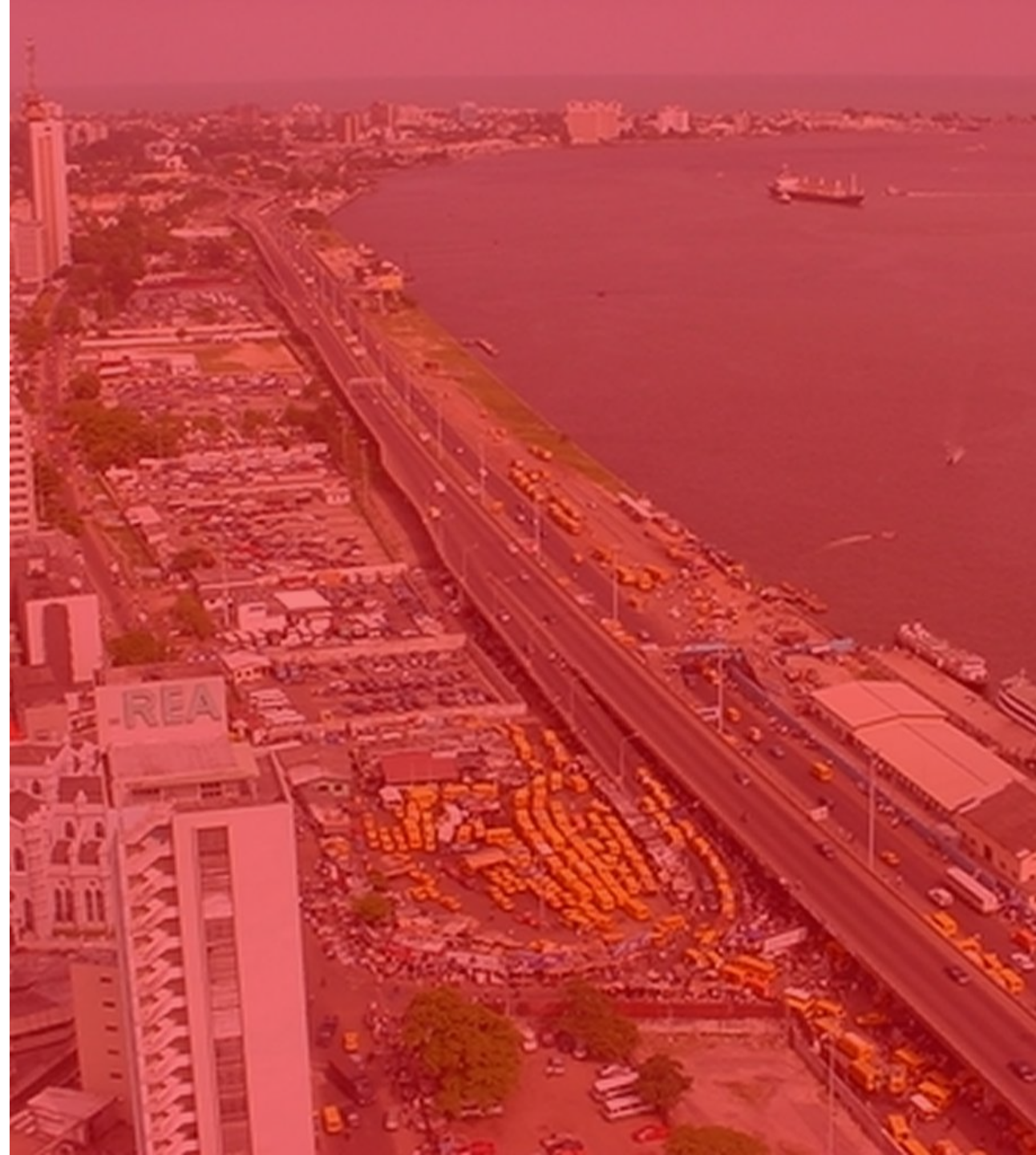


PR24

MONTHLY SECURITY BREAKFAST MEETING

AUGUST 2019

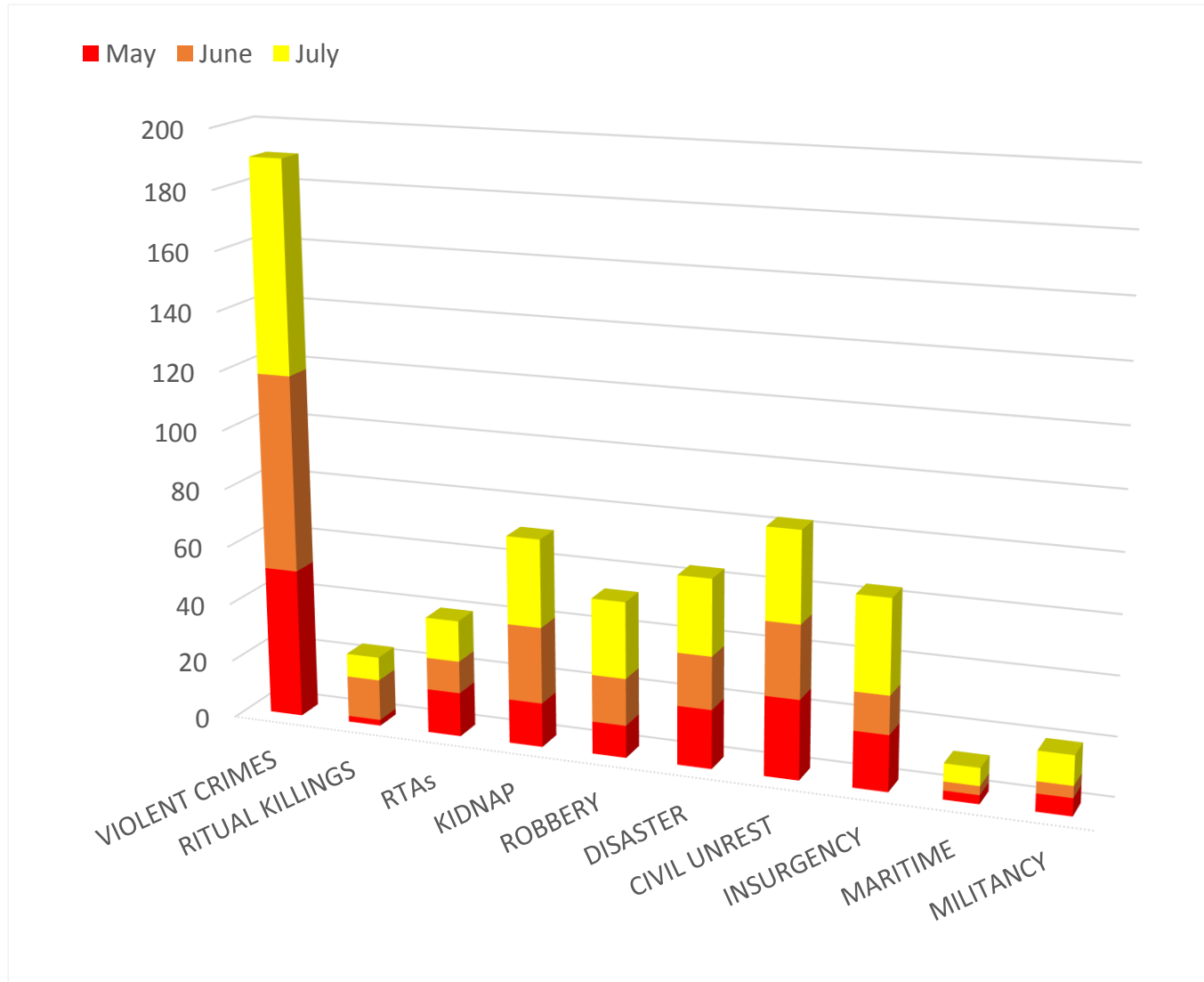


CALM DOWN NIGERIA



SOME MATTERS ARISING

PR24 PREVIOUS MONTH IN REVIEW



MAY 2020

Major threats: Violent crime, Civil Unrest and Disaster.

Highest incident reports: Southwest

Lowest incident reports: Northwest

JUNE 2020

Major threats: Violent Crime, Civil Unrest and Kidnapping.

Highest incident reports: Southwest

Lowest incident reports: Northwest

JULY 2020

Major threats: Violent Crime, Civil Unrest and Insurgency.

Highest incident reports:

Lowest incident reports:

PR24 AN OVERVIEW OF THREAT CONDITIONS



Violent Crime

Residents in the southwest, face increased risk of assault, murder, rape and other forms of violent crime.



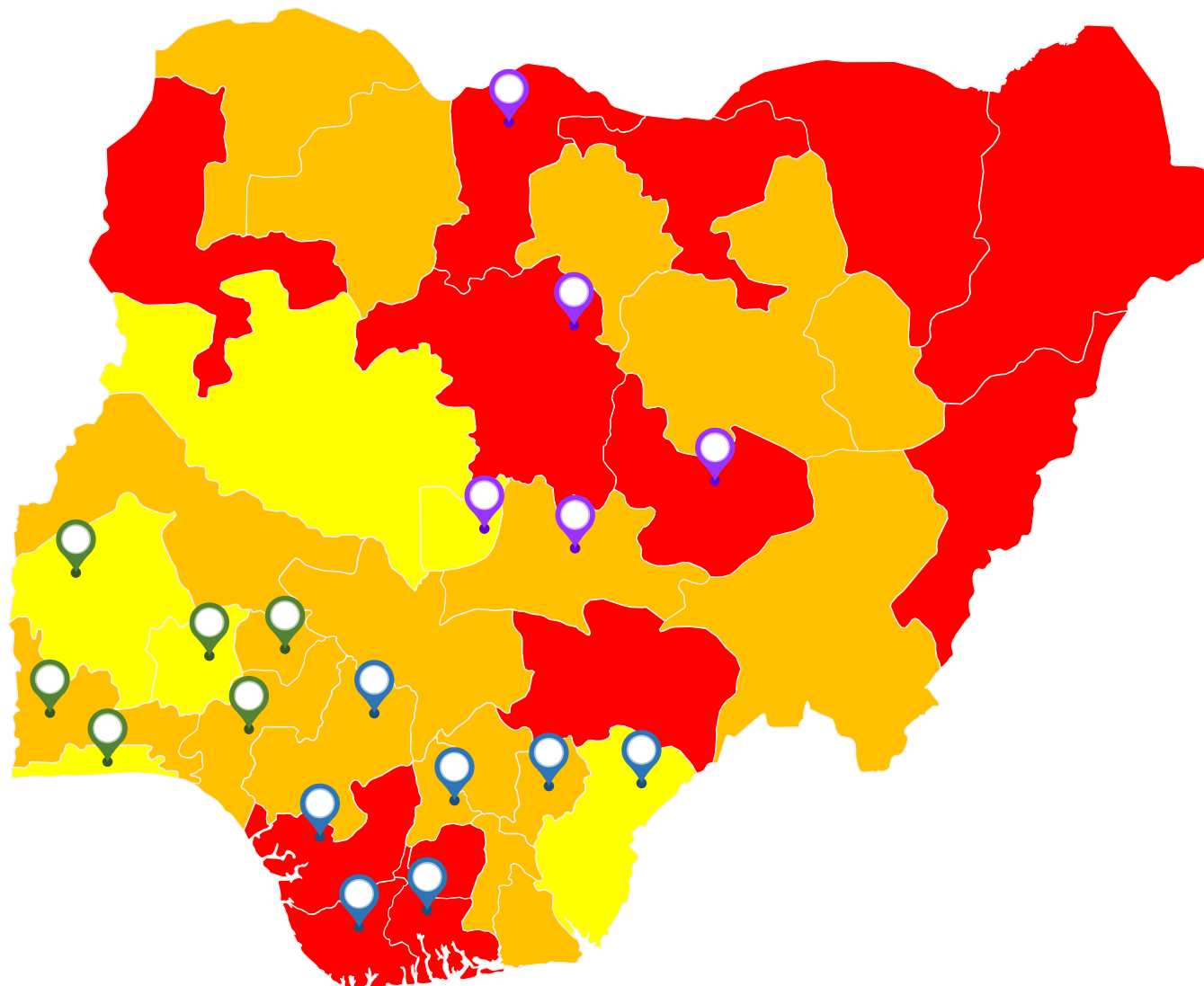
Kidnapping

Expatriates and dignitaries moving in this area are the prime targets of abductions which often occur mid-transit.



Civil Unrest

Protests and demonstrations by residents have turned violent and led to property damage and loss of life.



PR24 POLITICAL RISKS – QUICK SAND

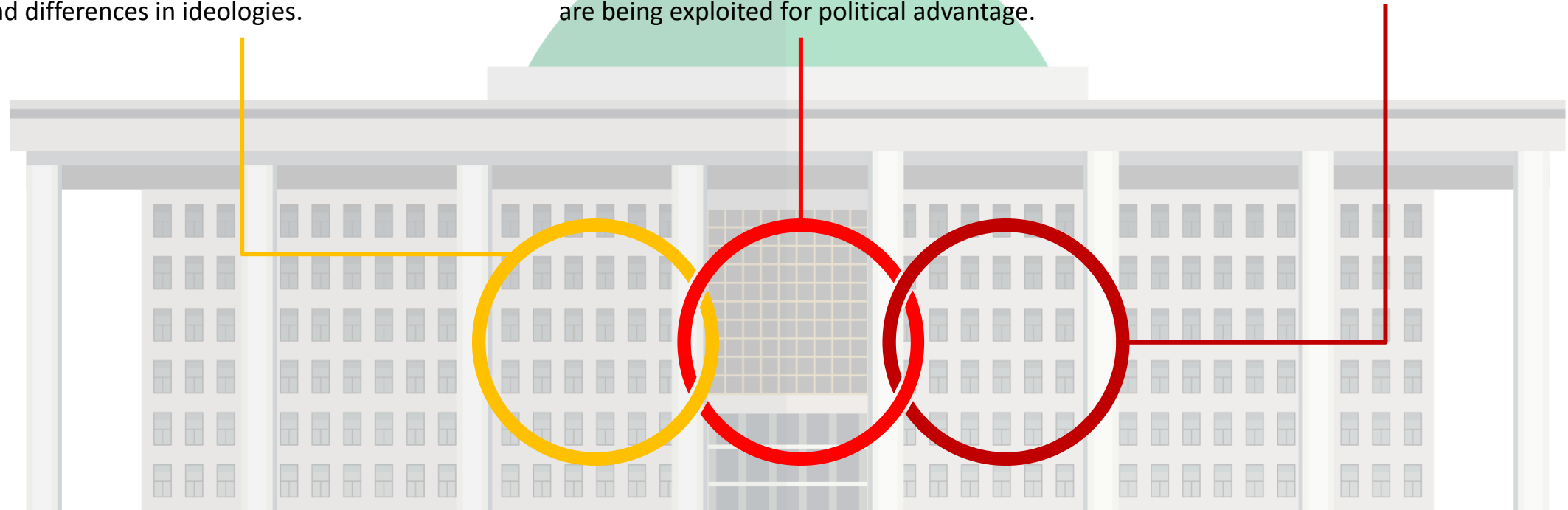
Shifting loyalties, mass defections and counter allegations have marked the political climate this period. Feuding and clashes on intra and inter-party levels have resulted in varying levels of instability, especially within the ruling APC. The defection of Edo state Governor Godwin Obaseki and Deputy governor of Ondo state Agboola Ajayi is indicative of internal rifts and differences in ideologies.

Claims and allegations by parties involved hint at a possibility of electoral violence and malpractice during the elections.

Political parties have been accused of gathering and arming thugs for the forthcoming elections and allegations of plans of voter intimidation and rigging are common, and religious and ethnic divisions are being exploited for political advantage.

From all indications, there will be pockets of electoral violence during the governorship elections. The issue of credibility has also been raised regarding the electoral process and legitimacy of certain candidates.

The risk of post-electoral violence is high, with possible violent clashes between rival groups after the results are announced.



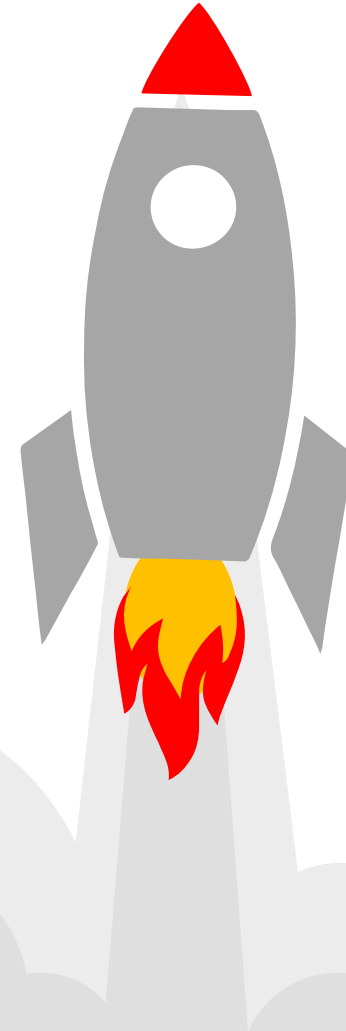
WHAT'S TRENDING IN THE NORTH?

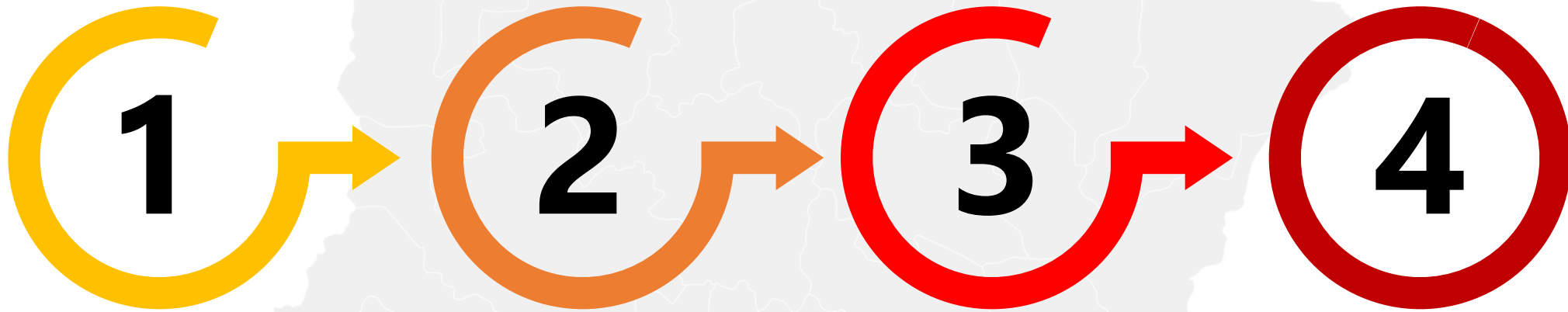
INSURGENCY, VIOLENT CRIME AND RTAS

Reports state that the withdrawal of troops to superstations in the Northeast has left it vulnerable – we have seen an increased rate of attacks by JAS, ISWAP and other AOGs. We can expect that the number of reported incidents will increase, unless strict measures are taken to control the situation.

Security forces face the task of maintaining law and order across the nation, as reports of theft, rape, murder and other forms of violent crimes come in each month, particularly from the capital cities with a high population density.

The end of the lockdown renewed free movement and interstate travel within the country – and brought with it the associated risks of kidnap and RTAs. Already reports indicate a resurgence in kidnap incidents, and major roads with heavy traffic and high usage have recorded several fatal accidents.



**VIOLENT CRIMES**

Murder, rape, assault, manslaughter, and other forms of violent crime will continue to trend in the Southwest, particularly in areas like Lagos and Ogun states where unemployment and other social issues make for a volatile mix.

KIDNAP FOR RANSOM

Kidnapping has been a major issue in the North Central, Northwest and Southeast for a while, and visitors to the region are advised to use major roads at periods of high visibility. Threat conditions will persist in the near term

CIVIL UNREST

The nation's capital records a lot of riots and protests, often politically inclined. Unless the socio-economic and political issues plaguing the nation are addressed, these protests will continue to hold with the resultant damage and loss of lives.

ARMED OPPOSING GROUPS

Insurgency is a major threat in the Northeast. Insurgents employ the use of brutal tactics, and civilians are their major targets. Businesses and residents in the area face a heightened risk of attack until the insurgency is resolved.



MONTHLY SECURITY BREAKFAST MEETING
SESSION IN PROGRESS